

BROKERAGE OFFERING/ INLAND PUSH BOAT VESSEL

Name *ELBE 1* **Europe number** *32200687*

Casco Hull

Dimensions 27,20 x 8,70 x 1.00 - 1.20m
 Built 1986
 Shipyard Melnik Praag CZ Country Czechia
 Tonnage Cert valid 2300 tons
 M3

Machinery

Main engines(s) 2 x Cummins KTA 19 HP 500/ total 1000 HP
 Gearbox Masson Info
 Bow-thruster(s) None
 Generator(s) Type 2x New Kva 40 and 30
 Pump(s) Type no info
 Winche(s) Type yes front/ hand
 Ruder(s) Type no info Propellor(s) 2x 90cm



Seller is known with general conditions, the specification can be different then offered by seller.

Tel:+31 (0)183 642828 M: +31 (0)653 244870

E: hs@hsbv.nl W: www.hsbv.nl

BROKERAGE OFFERING/ INLAND PUSH BOAT VESSEL

Deckhouse / wheelhouse

Wheelhouse information Type movable material steel height 9.50

Deckhouse aft accommodation

 Bedrooms 4/for 6 crew Mess room 1 / new

 Bathroom 1 plus sep toilet Entrance 1

General information

Nautical equipment

Maintenance of vessel many re fitted parts.

Certificates of vessel Valid 2026 - Communautaire/ Zone 2 (D) not Rijn area

Bottom report See report

Delivery terms 2025

Price

Price on request Conditions CIF Hamburg port / delivery time on request

Pictures:



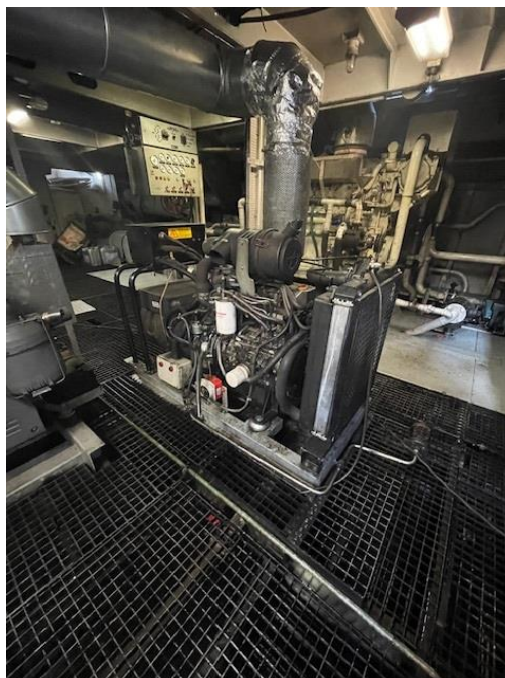
BROKERAGE OFFERING/ INLAND PUSH BOAT VESSEL



BROKERAGE OFFERING/ INLAND PUSH BOAT VESSEL



BROKERAGE OFFERING/ INLAND PUSH BOAT VESSEL



BROKERAGE OFFERING/ INLAND PUSH BOAT VESSEL



BROKERAGE OFFERING/ INLAND PUSH BOAT VESSEL



